

A brief introduction to Wearresist Technologies Private Limited

Company Profile

Wearresist Technologies Private Limited (WRTPL), established in February, 1996 by a group of technocrats having more than three decades of collective experience in maintenance and repair activities of core sector industry like cement, power, mining, sugar, paper, and oil drilling industry in the country.

Our Motto

“Providing X’tralife to the wear prone components using the best available technology.”

X’TRALIFE WEARPLATES family has been acknowledged as techno-commercially the best modular product available to the core sector.

Our Products

X’tralife Wearplates, X’tralife Burner tip, XL-Welding alloys, Technical Sprays, Fusible Powders, Flux cored wires, Sintered Hardfacing Alloys and Tubular Electrodes, 100% Solid Epoxies for Corrosion, Erosion and Stick resistance and X’tralife Special Coatings.

X’tralife Wearplates

The wear doctors for Indian core - sector industry presents the modular concept of wear protection using **X’tralife Wearplates**. These wearplates are constituted of a steel backed superlative wear resistant cladding. Manufacturing of these plate by a specialized fusion bonding process offers a significant advantages in terms of lowest dilution levels, highest concentration of carbides and superlative resistance to abrasion. X’tralife Wearplates users in a new era of wear protection for design and maintenance engineers over traditional wear protection using Mn-Steel Ni-hard, Hichrome, Heat Treated, Stainless steel or hardfacing by welding.

Standard X’tralife Wearplates: Size (in mm) : 2200 X 2200, 2200 X 1000 ;
5+3, 6+4, 8+4, 8+5, 10+5, 12+5, 15+5,... ;
Base plate: St. 37.2, St. 52; 13CrMo 44; I.4825.

X’tralife Wearplates cut to size: from 50 x 50 mm up to 2200 x 2200 mm,
Square holes from 15 x 15 mm; Round holes from \varnothing 15 mm,
Tear -shaped holes from \varnothing 6 / \varnothing 8 x 50 mm.

X’tralife Wearplate Grades: XL-CP, XL-ECO, XL-CC, XL-55MN, XL-55, XL-61,
XL-65, XL-IMP, XL-58, XL-CrB, XL-MCP.

Applications: Cyclone for cement plant, Elbow joint for duct, Wear protection on buckets, Cyclone for mines, Separator cone, Body liner of E-mill body, Louvre ring for cement plant, Crown for mill hub, Screw conveyor for coal feeding, Transition piece for coal hopper, Furnace part for sponge iron plant, Screen for sinter plant, Clinker hopper for cement plant, and all possible applications to combat wear.



X'TRALIFE BURNER TIP

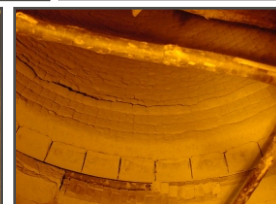
X'tralife Burner Tip, engineered solution introduced by **WRTPL**, has resolved the above wear problem emphatically. **X'tralife Burner Tip** is wear-lined with a smooth surface and is enclosed in a special Steel body due to its special construction it prevents both warpage at an elevated temperature and also has an high erosion resistance. The special wear-lining retains its room temperature hardness of 62-65 RC upto more than 1000 °C. Furthermore, it has already being in service at different Power Stations with life improvement of more than **3 times** compared to conventionally used hardfaced SS310 Tips or Ceramic Tips.

**WELDING CONSUMABLES****XL Welding Alloys**

Alloy Steel, Stainless Steel & Cast Iron: XL-S, XL-LH, XL-LHH, XL-LLH, XL-HLH, XL-HT, XL-SPL, XL-18, XL-HTP, XL-HTM, XL-SS20, XL-SS21, XL-SS22, XL-SS23, XL-SS24, XL-SS25, XL-C10, XL-C30, XL-C31, XL-32, XL-C33, XL-C34 and others.

Tool Steel & Non-Ferrous: XL-D42, XL-D50, XL-D51, XL-BRONZE, XL-CU, XL-B01B/ B01F, XL-B05, XL-B02B / B02F, XL-B02MB / B02MF, XL-B07, XL-B08, XL-AL, XL-D59, XL-HMo, XL-HN, XL-H6, XL-H08, XL-H12, XL-CN07, XL-CN09, XL-HTS, XL-H20, XL-CUT, XL-WT and others.

Wear Protection: XL-CC59, XL-CC60, XL-CC61, XL-CC62, XL-CC65, XL-CC72, XL-BM, XL-BMS, XL-BMC, XL-BU, XL-BUS, XL-BH, XL-BS, XL-W55, XL-W56, XL-W58, XL-W60, XL-WH, XL-WTi, XL-RA, XL-H59, XL-NW COAT, XL-NW COATE and others.

**Fusible Powders**

Alloy 505, Alloy 508, Alloy 527, Alloy 505 and others.

Flux Cored Wires

CP-11, CC-43, CC-601, CP-20GN, CP-30N, CP-29, CP-42N, CC-403, CC-5275, CP-12, CP-54, CP-SPL, CC-5248, CP-12S, CP-30, CP-70, CS-32, CS-3200, CC-527, CP-07, CP-18 and others.

Sintered Hardfacing alloys and Tubular Electrodes

Versalloy 60, Versalloy 55, Versalloy 40, Versalloy 30, Versalloy 30 and others. Also, Diamond Carbides as Diamond Carbide 60, Diamond Carbide 55, Diamond Carbide 50 and others.



COATING CONSUMABLES

100 % Solid Epoxies for Corrosion, Erosion and Stick Resistance

X'TRA Performance, Zero VOC, Linings (100% Solid Systems)

XPL-1410, XPL-1401, XPL-1411, XPL-1401, XPL-2710,
XPL-2731, XPL-2701, XPL-2721, XPL-2810, XPL-2610,
XPL-2610UW, XPL-3620, XPL-4500, XPL-4510,
XPL-4520, XPL-4521, XPL-4523, XPL-5320.

Repair & Maintenance Products

Rebuilding: XL-XAR, XL-XHAR, XL-SXP-THIXSET,
XL-EXTRABUILD, XL-SS-M.

Resurfacing: XL-RMC, XL-XAC, XL-XAC-FE, XL-SXP.

Specialty Systems: XL-XTRA-THANE, XL-XTRA-CAULK,
XL-XAR-UW, XL-XAC-UW, XL-ULTRA-STICK,
XL-XTRA-PATCH.

Concrete Repair & Coating Systems

Repair Products: XL-Chem-F, XL-Chem-C, XL-Chem-C(P),
XL-Chem-C(S).

Lining Products: XPL-1401, XPL-2721, XPL-3620, XL-CHEM-SG.



Technical Sprays

Corrosion Resistant Products

Zinc Coating (WR 2500), Dry Wax coating (WR 2570), Dunois coating (WR 2510),
Strippable protective coating (WR 2560), Ultraprotect coating (WR 2580), Corrosion
protector (WR 2590), Galvanized Zinc coating (WR 2500G).

Skin Care Products

Skin Irritant guard (WR 1540), Waterfree cleanser (WR 1580),

Sealing Compounds

Vacuum sealing Compound (WR 8020), Epoxy Sealer (WR 8030)



Electrical / Electronic Care Products

Cleaner Cum Lubricant (WR 1804), Superlative electric contact cleaner (WR 1801), Electric/Electronic
component cleaner (WR 1803), Degreaser and Cleaner (WR 1800), Coating for Battery Terminal
Protection (WR 1806), Insulative and corrosion resistant coating for PCB Assemblies (WR 1808),
On-line Safety Solvent (WR 624), Insulating Varnish (WR1805), Clear Plastic Spray (WR 9520),
Contact cleaner (WR 1801G), Electric Insulator (WR 2520), Optical Cleaner (WR 1807), Dielectric
coating (WR 2010), Electro-safe Contact Cleaner (WR 625), Ultra-strong Cleaner (WR 625)

Lubrication Products

Belt gripper and lubricant (WR 9002), Open Chain Lubricant (WR 9002), Multi-Functional Lubricant
Cum Penetrant (WR 9040), Teflon dry Spray (WR 9610), MoS₂, Dry Bonded Lubricant (WR 9101),
Ecofriendly CTC (WR 9030), Versatile Penetrant & Lubricant (WR 914 A), Heavy Duty Multipurpose
Lubricant (WR 914 G), Gearlube (WR 7004), Multifunctional Lubricant (WR 20 MC), Mould Release
Spray (WR1200), Anti Spatter Spray (WR1200), Bearing Cleaner (WR 91 B), Cleaner for On-line
Stripping Removal (WR 94 S), Paint Remover (WR 9050).

Temperature Resistant Products

Temperature Resistance Guard (HTR) (WR 4010), Acid Protective Coatings (ARC) (WR 1010)

COATING CONSUMABLES**Technical Sprays****Dewatering Product**

Dewaterer (WR 3590)

Anti-organic Growth Product

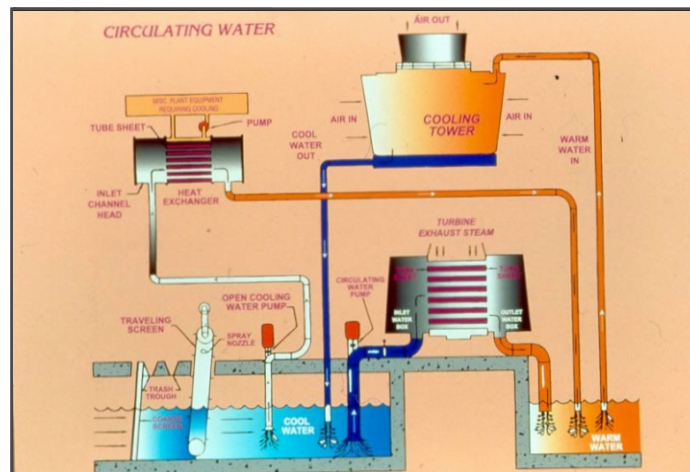
Organic Growth Eradicator (WR 8000)

Anti-seize Products

High Temperature Antiseize Coating (WR 9690),
Moly based Anti-seize Coating (WR 9600 M),
Copper based Anti-seize Coating (WR 9600 C)

Repair & Maintenance Products

Ceramic Epoxy (CRE) (WR 2530), Ceramic
Epoxy [HI] (WRC) (WR 2540), High Build Epoxy (HTR) (WR 2550).

**X'tralife Special Coatings****Ultraprotect**

" **Ultraprotect** " is a dark brown liquid which when applied on rusty metallic structures, particularly iron & steel surfaces, converts the rust into a black coating. Even the best paints cannot give full protection if they are applied on a steel surface which is not entirely free from rust.

Ultraslide Primer (HC)

"**Ultraslide Primer (HC)** " has been formulated by us especially for carrying out high class priming work. ULTRASLIDE PRIMER (HC) is commonly used, both on steel reinforcement (old or new), prior to concreting or carrying out repairs of broken columns, beams, slabs etc. and also on broken masonry for good adhesion of fresh concrete or mortar.

Ultraslide Flexi Compound

WEARRESIST has developed, a unique product called " **Ultraslide Flexi Compound**" made from improved " CYCLO-ALIPHATIC GRADE ", for sealing and water proofing applications, which is resistant to " Ultra Violet Rays" in sunlight, unlike ordinary epoxies. It is also permanently " Fungus Proof ".

Ultraslide HT

Ultraslide HT changed the whole image of ordinary coatings. The unique feature of **Ultraslide-HT** is that it mainly consist of inorganic materials (more than 98%). It is proved to be heat resistant (60 °C - 1800 °C), water resistant (including sea water) as well as very strong in adhesion. **Ultraslide HT** product is highly anti-corrosive, hazardless, easy to apply.

Ultracoat FP

Ultracoat FP, an intumescent coating, has been specially formulated to provide fire protection for structural steels in Military/Marine applications. Additionally, it provides its valued fire protection for structural steels in hospitals, schools, factories, warehouses, hotels, office blocks, industrial plants etc. On internal steelwork the intumescent coating offers a lightweight, decorative means of fire protection and on external sections the intumescent coating is complemented by a durable sealer /finish coat.

Ultratherm

A design based on the latest ceramic technology and is a unique combination of high-performance aliphatic urethanes, elastomeric acrylics and resin additives in a water-borne formula. Used to Insulate interior and exterior walls on substrates of wood, concrete, metal, standard wall board, stone or stucco; roofing on substrates of wood, metal, concrete, stucco, tar, rubber or asphalt shingles; hot pipes and/or its insulation; swimming pool decking; oil and gas storage tanks, etc.

X'tralife Special Coatings

Ultraflexiseal

A revolutionary rubber sealant useful for any sealing purpose where expansion / contraction is frequent. Used for avoiding false air leakage in continuous process industry like cement, power, steel, etc. It can stick to any base metal like Polyethylene, Poly propylene, Nylon, Steel or concrete. Also has excellent di-electric properties. A light weight hand operated reusable gun is available for use with the ½ kg cartridge. It has exceptional resistance to all weathering factors in outdoor conditions, particularly to Ultraviolet Rays in sunlight which cause deterioration of other rubbers.

Ultratherm - HT

A design of several specially formulated resins and additives to provide a base that is flexible enough to withstand severe climate changes, as well as severe heat peaks without loss of adhesion. It stays intact with constant adhesion above 2000 °F degrees. A pliable film that reacts to flame. The face of the coating will glaze during a fire to form a complete protection shield against flame, smoke, gases and heat. It swells, upon contact with fire and form a char that is extremely lightweight and fragile. It is non-emittance of toxic fumes during a fire.

EQUIPMENTS

HFSP - Revolutionary Portable Auto-welder

A revolutionary equipment designed to carry out automatic welding on rollers, tyres or table liners with easy controls for world-class quality. The equipment consists of all necessary facilities for such jobs including auto - indexing , X -Y-Z traverse movements and oscillation. HFSP is developed first time in India using the latest technology and is particularly useful for regenerating roller press rolls , supporting rolls, tyres and table liners for vertical mills both for workshop and insitu welding.



Prime Cut - Ultrathermic Cutting System

The unique burning action of **Prime Cut** Ultrathermic cutting rods liquefies any material in their path, using the material itself as fuel. Utilizing only oxygen, they will quickly cut or melt through almost any known material, including cast iron, steel, stainless steel, concrete, granite, nickel, titanium and aluminum, as well as exotic metals. Because these systems cut so quickly, there is minimal heat build-up, enabling the temper of the material to remain virtually unchanged. The Ultrathermic rods burn in damp atmospheres, even when submerged in mud or water. This unique performance feature gives **Prime Cut** a substantial advantage over other types of equipment, especially for industries that experience adverse working conditions such as those found in mining or heavy construction.



Go-weld - Portable MIG Welder (Go anywhere & Weld anywhere)

It is the most versatile welding product with unrivaled features. Built to last in the industrial environment, Goweld features a die cast aluminum chassis, heavy duty motor with optical encoder and programmed microprocessor control circuit to monitor feed and weld functions. Together the optical encoder and microprocessor yield speed control with the least variance. More consistent speed means more consistent welds. LEDs indicate status, polarity and low battery warning and features many outstanding unmatched features.



For the product details, technical assistance or application assistance please contact us or mail us at wearresist@wearresist.com.

WEARRESIST TECHNOLOGIES PRIVATE LIMITED

749/9, G.I.D.C., Makarpura, Vadodara - 390 010, Gujarat (India)
Tel: +91-265-2634734/2641548, Fax: +91-265-3042002; www.wearresist.com

APS/2015-16/Introduction

Date: 03/06/2015

K/a . Sri Mr. (E-mail-)

M/s.

Sub: Introduction as vendor for the supply of WRTPL Welding Electrodes in your esteemed organization

Dear Sir,

We thank you for the kind courtesy extended to undersigned during his visit at your office. Further, we refer the telecom discussion with you and interested to have requirements in Welding Electrodes and Consumables.

We take the opportunity to introduce ourselves as an authorized stockiest of industrial products for **WRTPL Welding Electrodes** for past 1 year.

We are currently based in Visakhapatnam, Andhra Pradesh, catering to customers in coastal AP, i.e., from Srikakulam to Prakasam Districts.

With our extensive experience and competent staff comprising of engineers, salespersons and an accountant along with peripheral staff, we have gained a deep understanding of and expertise in fulfilling customer requirements and we always endeavor to serve better.

In keeping with the above goal, we maintain sufficient stocks of all the regular products enlisted below in a Godown at the city's centrally located commercial area in Narayana Street near Leela Mahal Theatre.

The stocks held with : of all types of products

Size of Godown: 4000 sft

Mode of transport/supply to local customers: By dedicated Auto.

TIN No. 378090187175 ECC No. ACTPJ7718HXDOO1

Our Products Include

- 1) XL-Welding alloys
- 2) X'tralife Burner tip
- 3) X'tralife Wearplates
- 4) Technical Sprays
- 5) Fusible Powders
- 6) Flux cored
- 7) wires, Sintered
- 8) Hardfacing Alloys and Tubular Electrodes
- 9) 100% Solid Epoxies for Corrosion
- 10) Erosion and Stick resistance
- 11) X'tralife Special Coatings.

WELDING CONSUMABLES

The product range includes Different types of medium and high technology as per the application, suitable for several sectors .

Here we have mentioned some of our products for different types of metals.

Alloy Steel, Stainless Steel & Cast Iron:

XL-S, XL-LH, XL-LHH, XL-LLH, XL-HLH, XL-HT, XL-SPL, XL-18, XL-HTP, XL-HTM,

XL-SS20, XL-SS21, XL-SS22, XL-SS23, XL-SS24, XL-SS25,

XL-C10, XL-C30, XL-C31, XL-32, XL-C33, XL-C34 and others.

**Tool Steel & Non-Ferrous:**

XL-D42, XL-D50, XL-D51,

XL-BRONZE, XL-CU, XL-B01B/ B01F, XL-B05, XL-B02B / B02F,

XL-B02MB / B02MF, XL-B07, XL-B08, XL-AL, XL-D59, XL-HMo,

XL-HN, XL-H6, XL-H08, XL-H12, XL-CN07, XL-CN09, XL-HTS,

XL-H20, XL-CUT, XL-WT

**Wear Protection:**

XL-CC59, XL-CC60, XL-CC61, XL-CC62,

XL-CC65, XL-CC72, XL-BM, XL-BMS, XL-BMC, XL-BU, XL-BUS,

XL-BH, XL-BS, XL-W55, XL-W56, XL-W58, XL-W60, XL-WH,

XL-WTi, XL-RA, XL-H59, XL-NW COAT, XL-NW COAT

X'TRALIFE BURNER TIP

X'tralife Burner Tip, engineered solution introduced by **WRTPL**, has resolved the above wear problem emphatically. **X'tralife Burner Tip** is wear-lined with a smooth surface and is enclosed in a special Steel body due to its special construction it prevents both warpage at an elevated temperature and also has an high erosion resistance. The special wear lining retains its room temperature hardness of 62-65 RC upto more than

1000 OC. Furthermore, it has already being in service at different Power Stations with life improvement of more than **3 times** compared to conventionally used hardfaced SS310 Tips or Ceramic Tips.



X'tralife Wearplates

The wear doctors for Indian core - sector industry presents the modular concept of wear protection using **X'tralife Wearplates**. These wearplates are constituted of a steel backed superlative wear resistant cladding. Manufacturing of these plate by a specialized fusion bonding process offers a significant advantages in terms of lowest dilution levels, highest concentration of carbides and superlative resistance to abrasion. X'tralife Wearplates users in a new era of wear protection for design and maintenance engineers over traditional wear protection using Mn-Steel Ni-hard, Hichrome, Heat Treated, Stainless steel or hardfacing by welding.

Applications: Cyclone for cement plant, Elbow joint for duct, Wear protection buckets, Cyclone for mines, Separator cone, Body liner of E-mill body,

Louvre ring for cement plant, Crown for mill hub, Screw conveyor for coal feeding, Transition piece for coal hopper, Furnace part for sponge iron plant,

Screen for sinter plant, Clinker hopper for cement plant, and all possible applications to combat wear.





Fusible Powders

Alloy 505, Alloy 508, Alloy 527, Alloy 505 and others.

Flux Cored Wires

CP-11, CC-43, CC-601, CP-20GN, CP-30N, CP-29, CP-42N,

CC-403, CC-5275, CP-12, CP-54, CP-SPL, CC-5248, CP-12S,

CP-30, CP-70, CS-32, CS-3200, CC-527, CP-07, CP-18 and others.

Sintered Hardfacing alloys and Tubular Electrodes

Veralloy 60, Versalloy 55, Versalloy 40, Versalloy 30, Versalloy 30 and others. Also, Diamond Carbides as Diamond Carbide 60, Diamond Carbide 55, Diamond Carbide 50.



COATING CONSUMABLES

100 % Solid Epoxies for Corrosion, Erosion and Stick Resistance

X'TRA Performance, Zero VOC, Linings (100% Solid Systems)

Rebuilding: XL-XAR, XL-XHAR, XL-SXP-THIXSET,

XL-EXTRABUILD, XL-SS-M.

Resurfacing: XL-RMC, XL-XAC, XL-XAC-FE, XL-SXP.

Specialty Systems: XL-XTRA-THANE, XL-XTRA-CAULK,

XL-XAR-UW, XL-XAC-UW, XL-ULTRA-STICK,

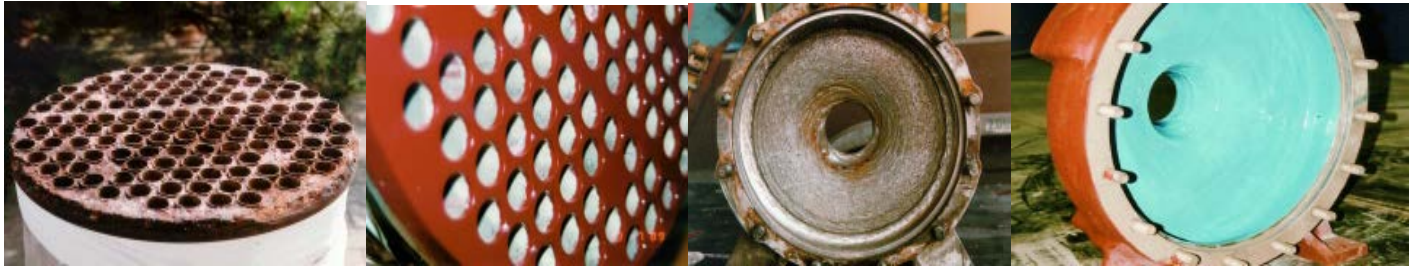
XL-XTRA-PATCH.

Repair & Maintenance Products

Repair Products: XL-Chem-F, XL-Chem-C, XL-Chem-C(P),

XL-Chem-C(S).

Lining Products: XPL-1401, XPL-2721, XPL-3620, XL-CHEM-SG



Technical Sprays

Corrosion Resistant Products

Zinc Coating (WR 2500), Dry Wax coating (WR 2570), Dunois coating (WR 2510), Strippable protective coating (WR 2560), Ultraprotect coating (WR 2580), Corrosion protector (WR 2590), Galvanized Zinc coating (WR 2500G).

Skin Care Products

Skin Irritant guard (WR 1540), Waterfree cleanser (WR 1580),

Sealing Compounds

Vacuum sealing Compound (WR 8020), Epoxy Sealer (WR 8030)

Electrical / Electronic Care Products

Cleaner Cum Lubricant (WR 1804), Superlative electric contact cleaner (WR 1801), Electric/Electronic component cleaner (WR 1803), Degreaser and Cleaner (WR 1800), Coating for Battery Terminal Protection (WR 1806), Insulative and corrosion resistant coating for PCB Assemblies (WR 1808),

On-line Safety Solvent (WR 624), Insulating Varnish (WR1805), Clear Plastic Spray (WR 9520), Contact cleaner (WR 1801G), Electric Insulator (WR 2520), Optical Cleaner (WR 1807), Dielectric coating (WR 2010), Electro-safe Contact Cleaner (WR 625), Ultra-strong Cleaner (WR 625)

Lubrication Products

Belt gripper and lubricant (WR 9002), Open Chain Lubricant (WR 9002), Multi-Functional Lubricant Cum Penetrant (WR 9040), Teflon dry Spray (WR 9610), MoS , Dry Bonded Lubricant (WR 9101), 2 Ecofriendly CTC (WR 9030), Versatile Penetrant & Lubricant (WR 914 A), Heavy Duty Multipurpose Lubricant (WR 914 G), Gearlube (WR 7004), Multifunctional Lubricant (WR 20 MC), Mould Release Spray (WR1200), Anti Spatter Spray (WR1200), Bearing Cleaner (WR 91 B), Cleaner for On-line Stripping Removal (WR 94 S), Paint Remover (WR 9050).

Temperature Resistant Products

Temperature Resistance Guard (HTR) (WR 4010), Acid Protective Coatings (ARC) (WR 1010)

COATING CONSUMABLES

Technical Sprays

Dewatering Product

Dewaterer (WR 3590)

Anti-organic Growth Product

organic Growth Eradicatorr (WR 8000)

Anti-seize Products

High Temperature Antiseize Coating (WR 9690),

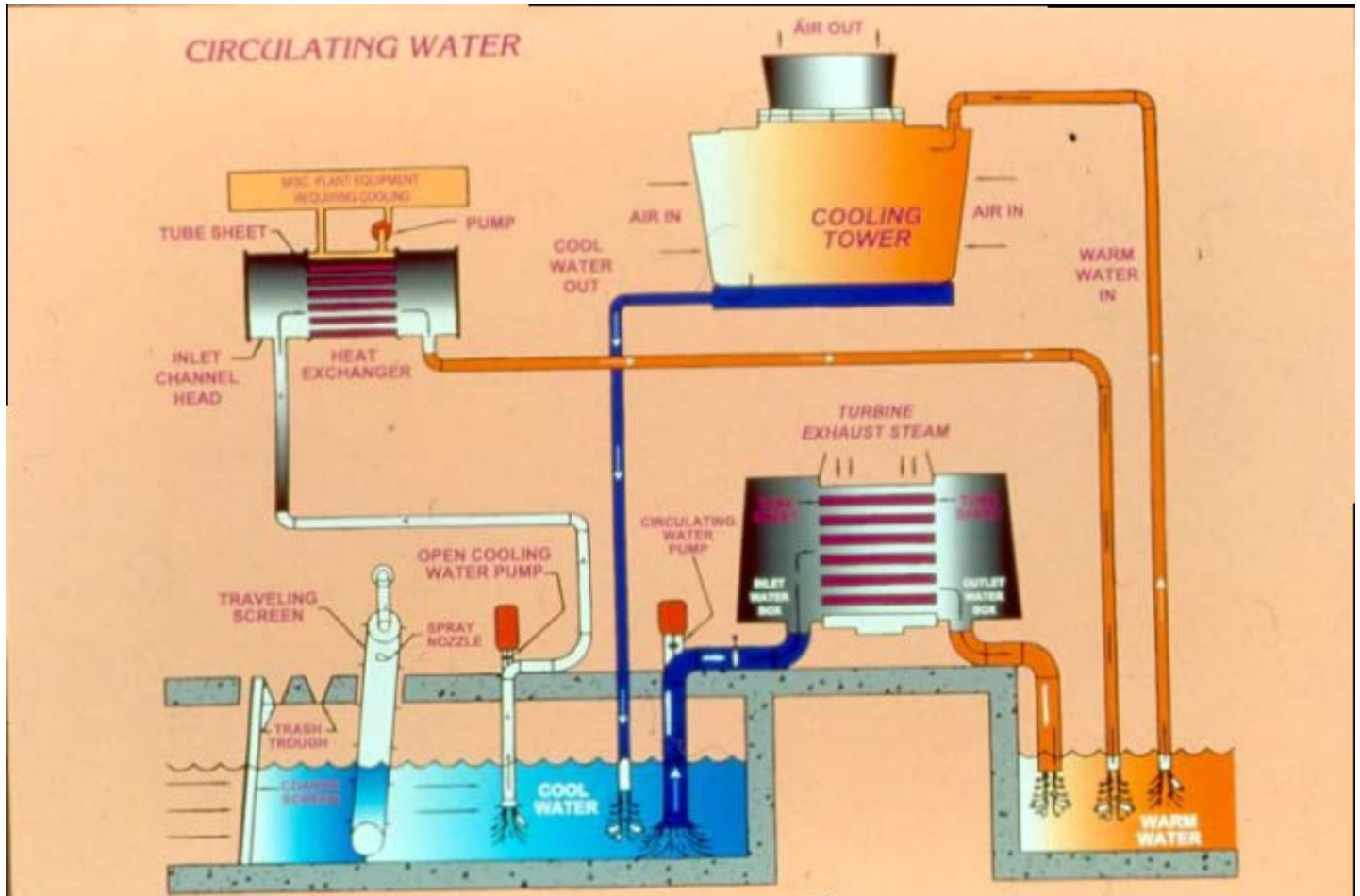
Moly based Anti-seize Coating (WR 9600 M),

Copper based Anti-seize Coating (WR 9600 C)

Repair & Maintenance Products

Ceramic Epoxy (CRE) (WR 2530), Ceramic

Epoxy [HI] (WRC) (WR 2540), High Build Epoxy (HTR) (WR 2550).



X'tralife Special Coatings

Ultraprotect

" **Ultraprotect** " is a dark brown liquid which when applied on rusty metallic structures, particularly iron & steel surfaces, converts the rust into a black coating. Even the best paints cannot give full protection if they are applied on a steel surface which is not entirely free from rust.

Ultraslide Primer (HC)

"**Ultraslide Primer (HC)** " has been formulated by us especially for carrying out high class priming work. ULTRASLIDE PRIMER (HC) is commonly used, both on steel reinforcement (old or new), prior to concreting or carrying out repairs of broken columns, beams, slabs etc. and also on broken masonry for good adhesion of fresh concrete or mortar.

Ultraslide Flexi Compound

WEARRESIST has developed, a unique product called " Ultraslide Flexi Compound" made from improved " CYCLO-ALIPHATIC GRADE ", for sealing and water proofing applications, which is resistant to " Ultra Violet Rays" in sunlight, unlike ordinary epoxies. It ia also permanently " Fungus Proof ".

Ultraslide HT

Ultraslide HT changed the whole image of ordinary coatings. The unique feature of **Ultraslide-HT** is that it mainly consist of inorganic materials (more than 98%). It is proved to be heat resistant (60 OC - 1800 OC), water resistant (including sea water) as well as very strong in adhesion.

Ultraslide HT product is highly anti-corrosive, hazardless, easy to apply.

Ultracoat FP

Ultracoat FP, an intumescent coating, has been specially formulated to provide fire protection for structural steels in Military/Marine applications. Additionally, it provides its valued fire protection for structural steels in hospitals, schools, factories, warehouses, hotels, office blocks, industrial plants etc. On internal steelwork the intumescent coating offers a lightweight, decorative means of fire protection and on external sections the intumescent coating is complemented by a durable sealer /finish coat.

Ultratherm

A design based on the latest ceramic technology and is a unique combination of high-performance aliphatic urethanes, elastomeric acrylics and resin additives in a water-borne formula. Used to Insulate interior and exterior walls on substrates of wood, concrete, metal, standard wall board, stone or stucco; roofing on substrates of wood, metal, concrete , stucco, tar, rubber or asphalt shingles; hot pipes and/or its insulation; swimming pool decking; oil and gas storage tanks, etc.

X'tralife Special Coatings

Ultraflexiseal

A revolutionary rubber sealant useful for any sealing purpose where expansion / contraction is frequent. Used for avoiding false air leakage in continuous process industry like cement, power, steel, etc. It can stick to any base metal like Polyethylene, Poly propylene, Nylon, Steel or concrete. Also has excellent di-electric properties. A light weight hand operated reusable gun is available for use with the ½ kg cartridge. It has exceptional resistance to all weathering factors in outdoor conditions, particularly to Ultraviolet Rays in sunlight which cause deterioration of other rubbers.

Ultratherm – HT

A design of several specially formulated resins and additives to provide a base that is flexible enough to withstand severe climate changes, as well as severe heat peaks without loss of adhesion. It stays intact with constant adhesion above 2000 OF degrees. A pliable film that reacts to flame. The face of the coating will glaze during a fire to form a complete protection shield against flame, smoke, gases and heat. It swells, upon contact with fire and form a char that is extremely lightweight and fragile. It is non emittance of toxic fumes during a fire.

EQUIPMENTS

HFSP - Revolutionary Portable Auto-welder

A revolutionary equipment designed to carry out automatic welding on rollers, tyres or table liners with easy controls for world-class quality. The equipment consists of all necessary facilities for such jobs including auto - indexing , X -Y-Z traverse movements and oscillation. HFSP is developed first time in India using the latest

technology and is particularly useful for regenerating roller pressrolls , supporting rolls, tyres and table liners for vertical mills both for workshop and insitu welding.

Prime Cut - Ultrathermic Cutting System

The unique burning action of **Prime Cut** Ultrathermic cutting rods liquefies any material in their path, using the material itself as fuel .Utilizing only oxygen, they will quickly cut or melt through almost

any known material, including cast iron, steel, stainless steel, concrete, granite, nickel, titanium and aluminum, as well as exotic metals. Because these systems cut so quickly, there is minimal heat build-up, enabling the temper of the material to remain virtually unchanged. The Ultrathermic rods burn in damp atmospheres, even when submerged in mud or water. This unique performance feature gives **Prime Cut** a substantial advantage over other types of equipment, especially for industries that experience adverse working conditions such as those found in mining or

heavy construction.

Go-weld - Portable MIG Welder (Go anywhere & Weld anywhere)

It is the most versatile welding product with unrivaled features. Built to last in the industrial environment Go weld features a die cast aluminum chassis, heavy duty motor with optical encoder and programmed microprocessor control circuit to monitor feed and weld functions. Together the optical encoder and microprocessor yield speed control with the least variance. More consistent speed means more consistent welds. LEDs indicate status, polarity and low

battery warning and features many outstanding unmatched features



AUTHORISED DEALERS/STOCKIST FOR

