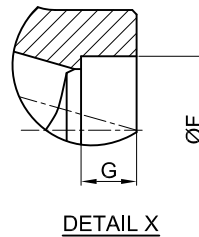


A	BD	F	G	H	Weight (kg)
165	377	27.2	12.7	225	16

STANDARDS	
Design	ASME B16.34
Pressure Temp. rating	ASME B16.34
End to End	Manufacturer's Standard
Socket weld Ends	ASME B16.11
Testing	MSS SP-61

TESTS AND TEST PRESSURE (bar)		
Shell	Hydrostatic	1164
Seat		854



S.NO	DESCRIPTION	MATERIAL
1	Body	ASTM A182 Gr F91 + Stellite
2	Disc	ASTM A479 Type 316 + Stellite
3	Stem	ASTM A479 Type 431
4	Bonnet	ASTM A182 Gr F91
5	Packing	Die Moulded Graphite Packing with Braided End Rings
6	Gland	ASTM A276 Type 410
7	Gland Flange	ASTM A105
8	Stud	ASTM A193 Gr. B16
9	Heavy Hex Nut	ASTM A194 Gr. 7
10	Yoke Bush	ASTM A582 Type 416
11	Handwheel	SG Iron
12	Handwheel Nut	ASTM A194 Gr. 7
--	Identification Plate	SS 304

For Enquiry only

Note:

- All valves are IBR certified.
- Globe valves can be installed either with the flow over or under the disc. Under conditions wherein the temperature gradient is high, it is recommended that globe valves be installed with the flow over the disc.

		▲ INDICATES CRUCIAL FEATURE		LARSEN & TOUBRO LIMITED					
		UNLESS OTHERWISE SPECIFIED ALL DIMENSIONS ARE IN mm ALL PROJECTIONS ARE FIRST ANGLE REMOVE ALL SHARP CORNERS -REFER DRAWING LT102082 FOR TOLERANCE AND MACHINING DETAILS							
		DRAWN	KVS	THIS DRAWING AND DESIGN IS THE PROPERTY OF LARSEN & TOUBRO LIMITED. IT IS A CONFIDENTIAL DISCLOSURE WHICH MUST NEITHER BE COPIED NOR USED IN ANY MANNER DETRIMENTAL TO THEIR INTERESTS.					
		CHECKED	AC						
		APPROVED	SSN	TITLE FORGED STEEL GLOBE VALVE GENERAL ASSEMBLY - HANDWHEEL OPERATED					
		DATE	28.01.2012						
		REV	DATE	ALT.NO	SCALE	SIZE : DN15	CLASS : 4500	TRIM: 5	TYPE: T-GLOBE
						DRG. No. :	REV	SHEET	
						LT-EQ-001	0	1 OF 1	